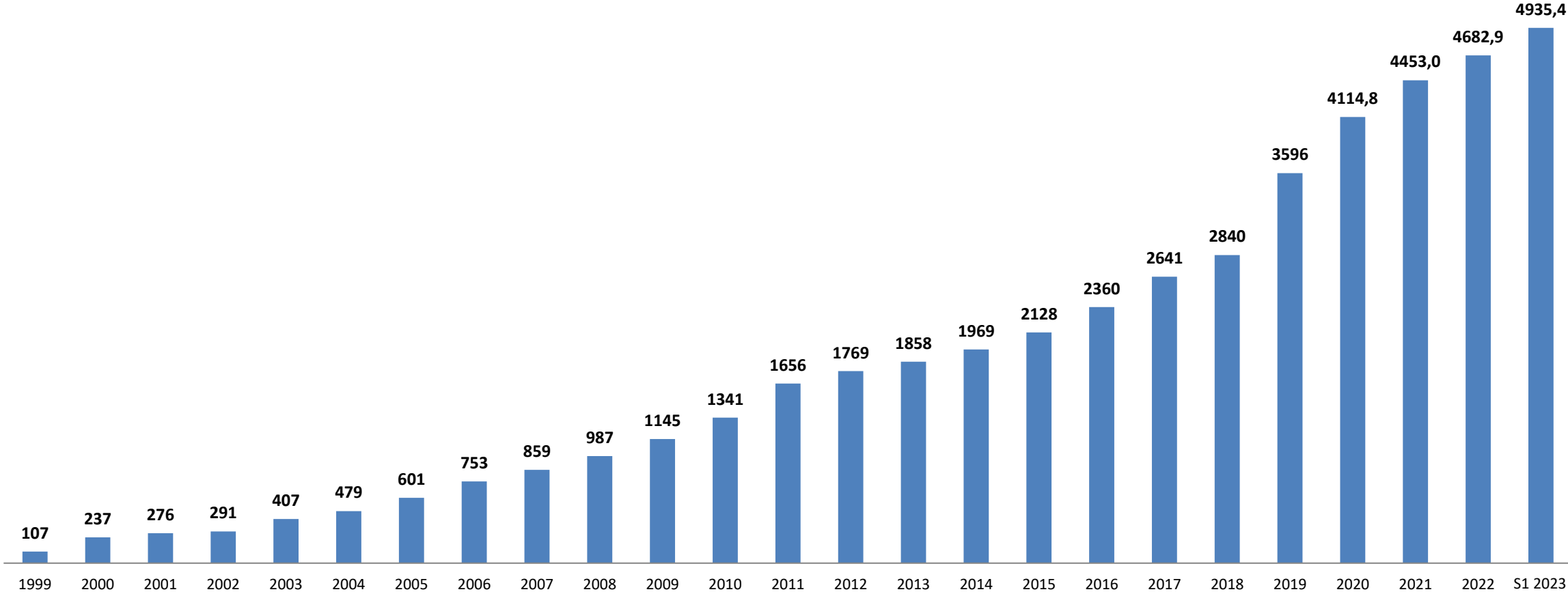




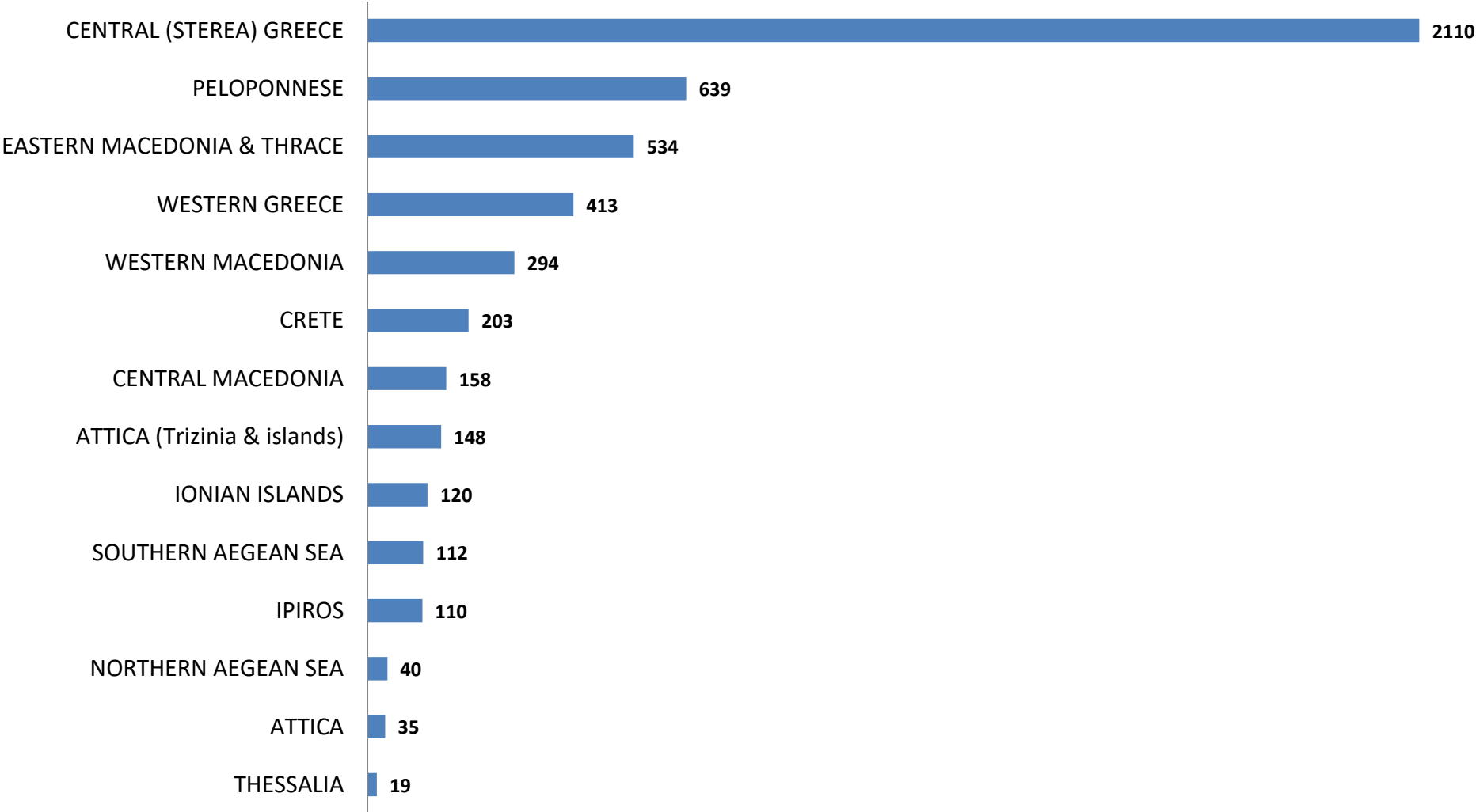
Total capacity to the grid (MW) per year



The HWEA Wind Energy Statistics take into account the wind capacity which is in commercial or test operation in Greece and are based on sources from the market actors. HWEA has made effort to crosscheck and confirm the data. However, HWEA does not guarantee the accuracy of them and do not undertake any relevant liability.



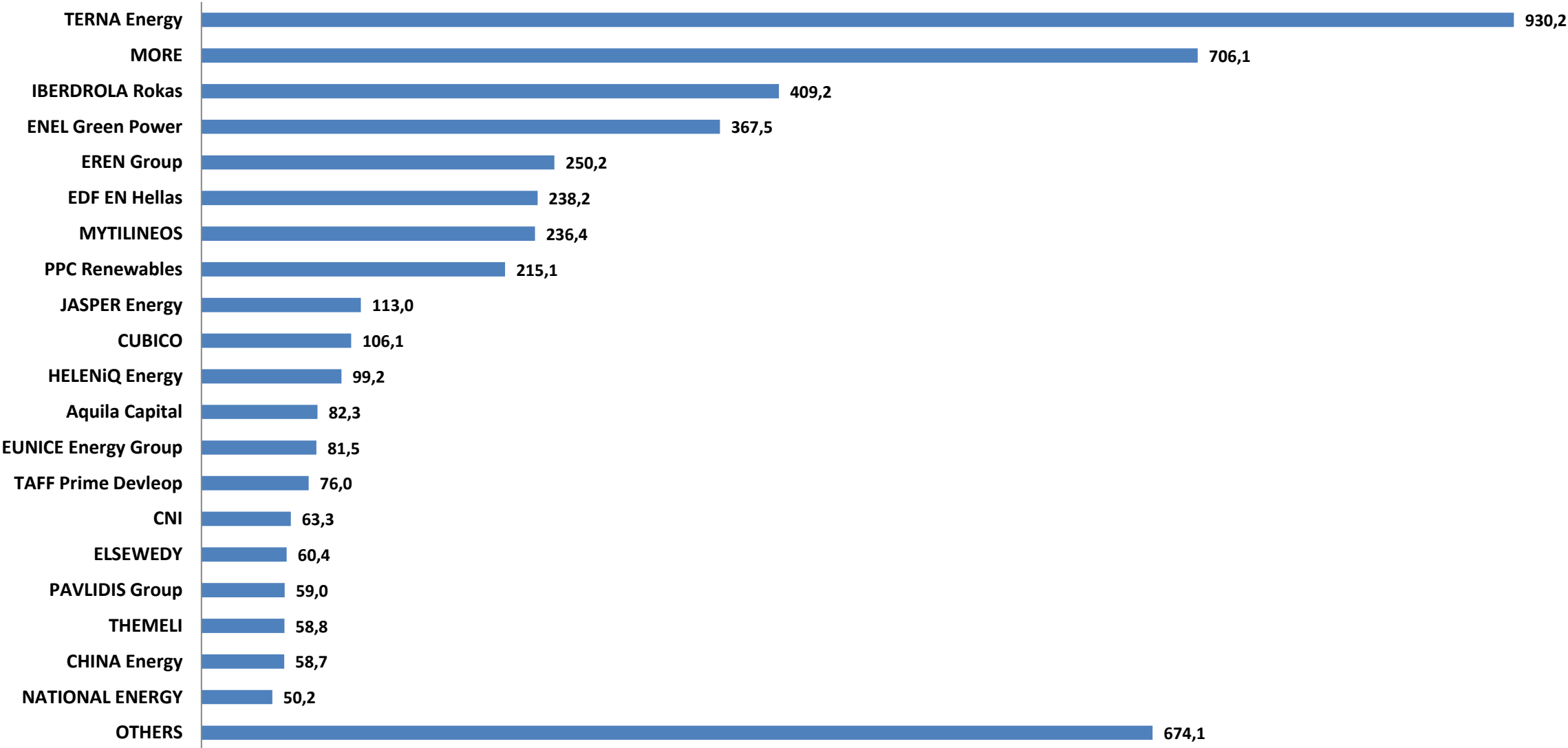
Capacity (MW) per region







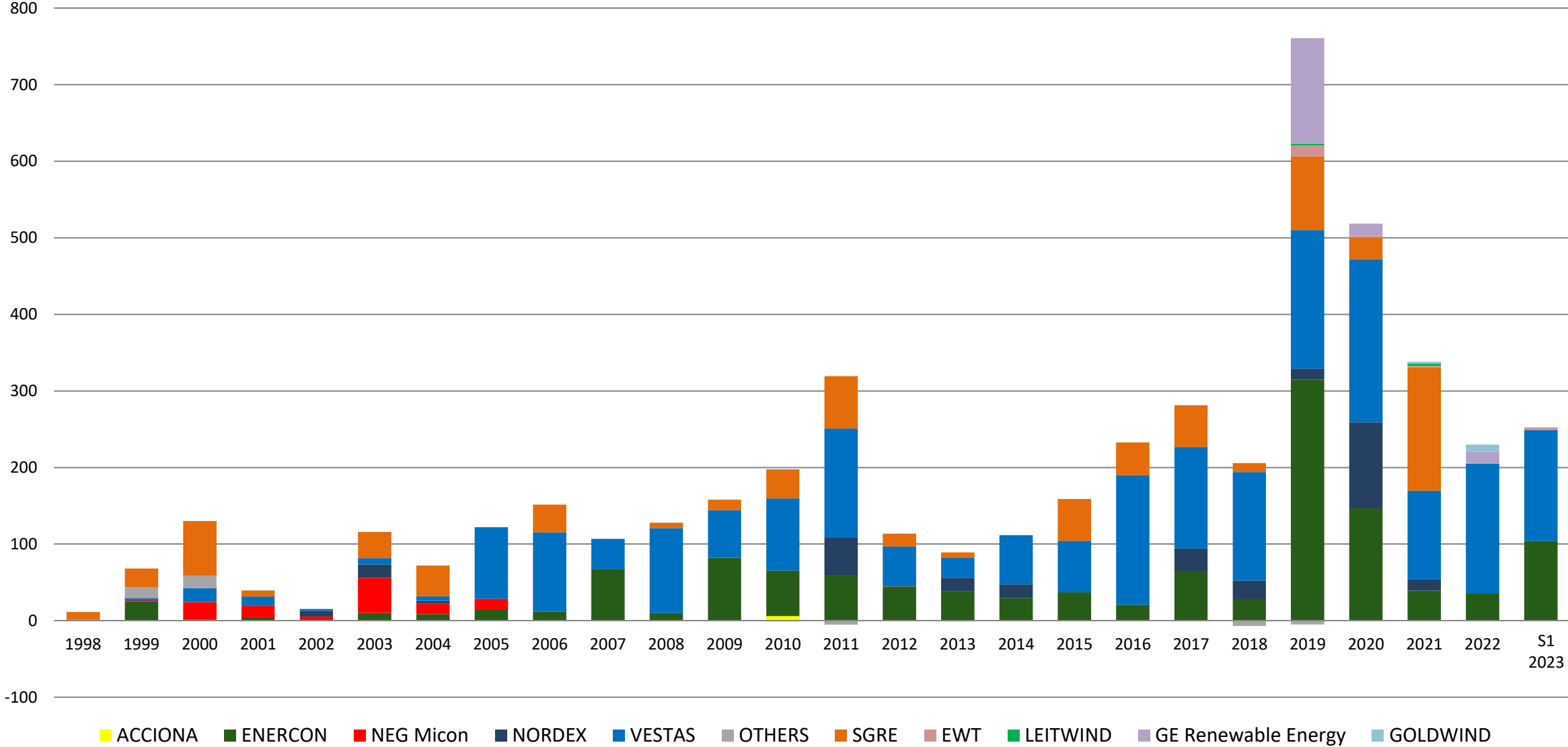
Capacity (MW) per wind energy producer (Top-20)



HWEA Wind Energy Statistics – S1 2023



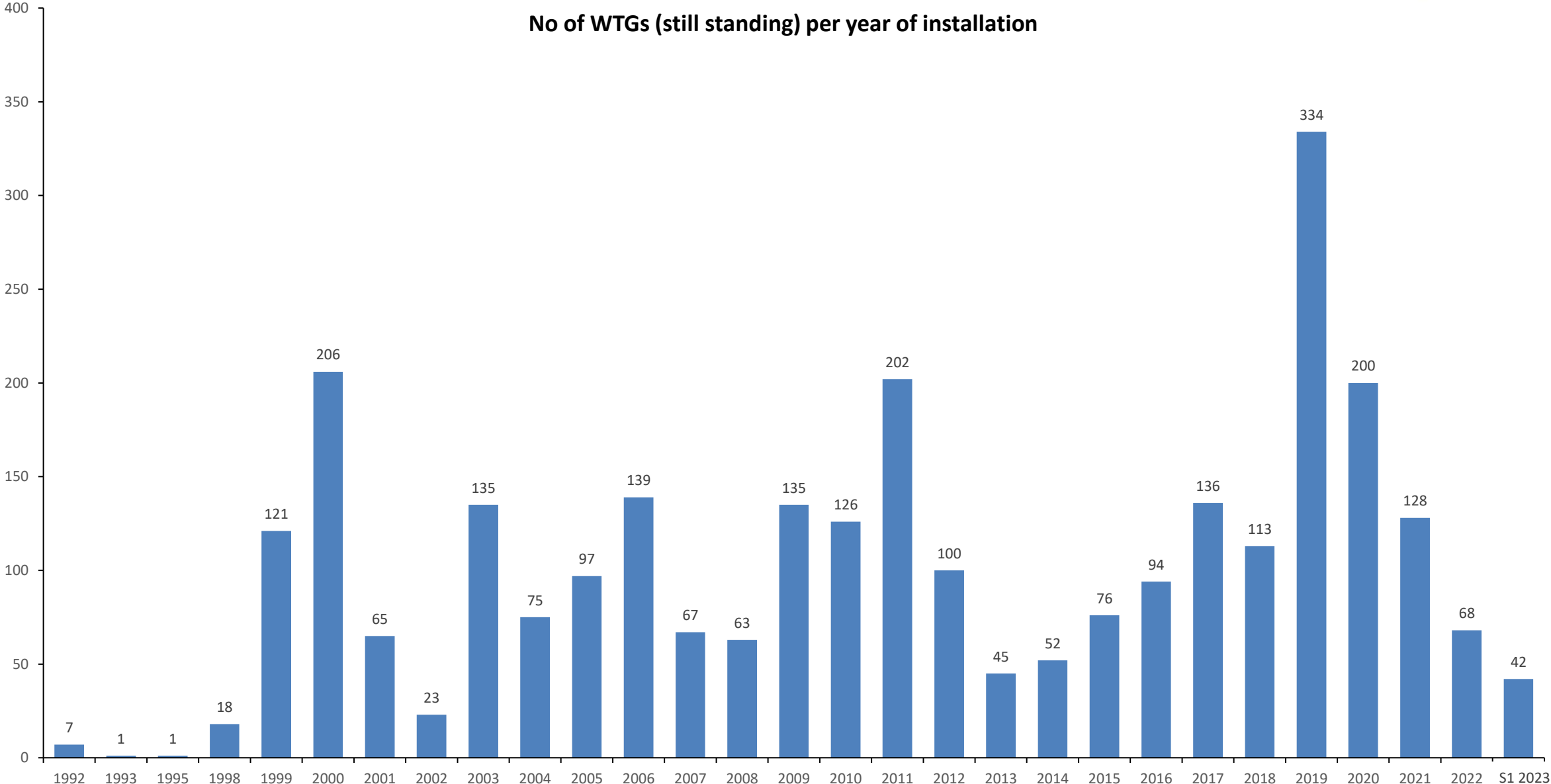
Capacity (MW) per year per manufacturer



HWEA Wind Energy Statistics – S1 2023

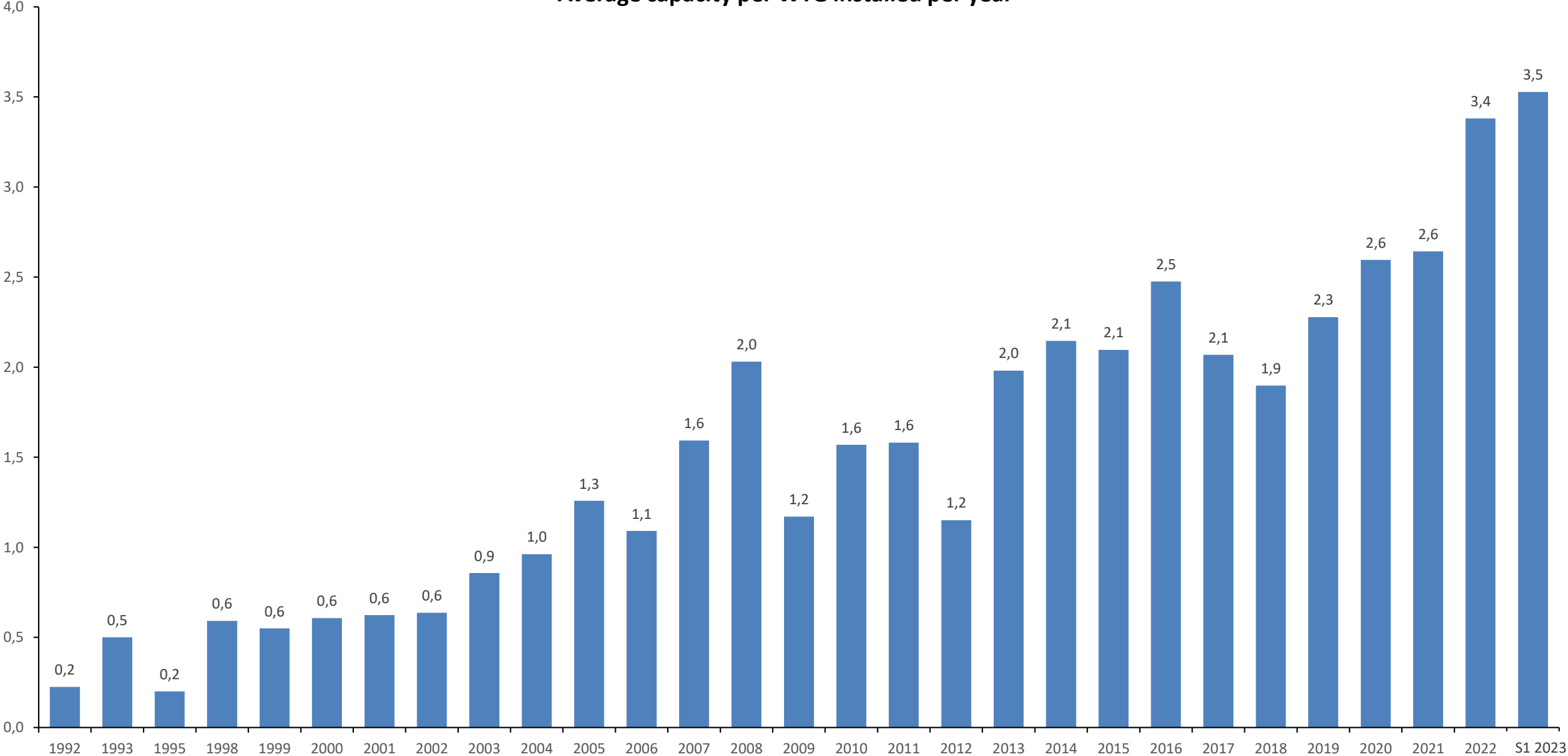


No of WTGs (still standing) per year of installation





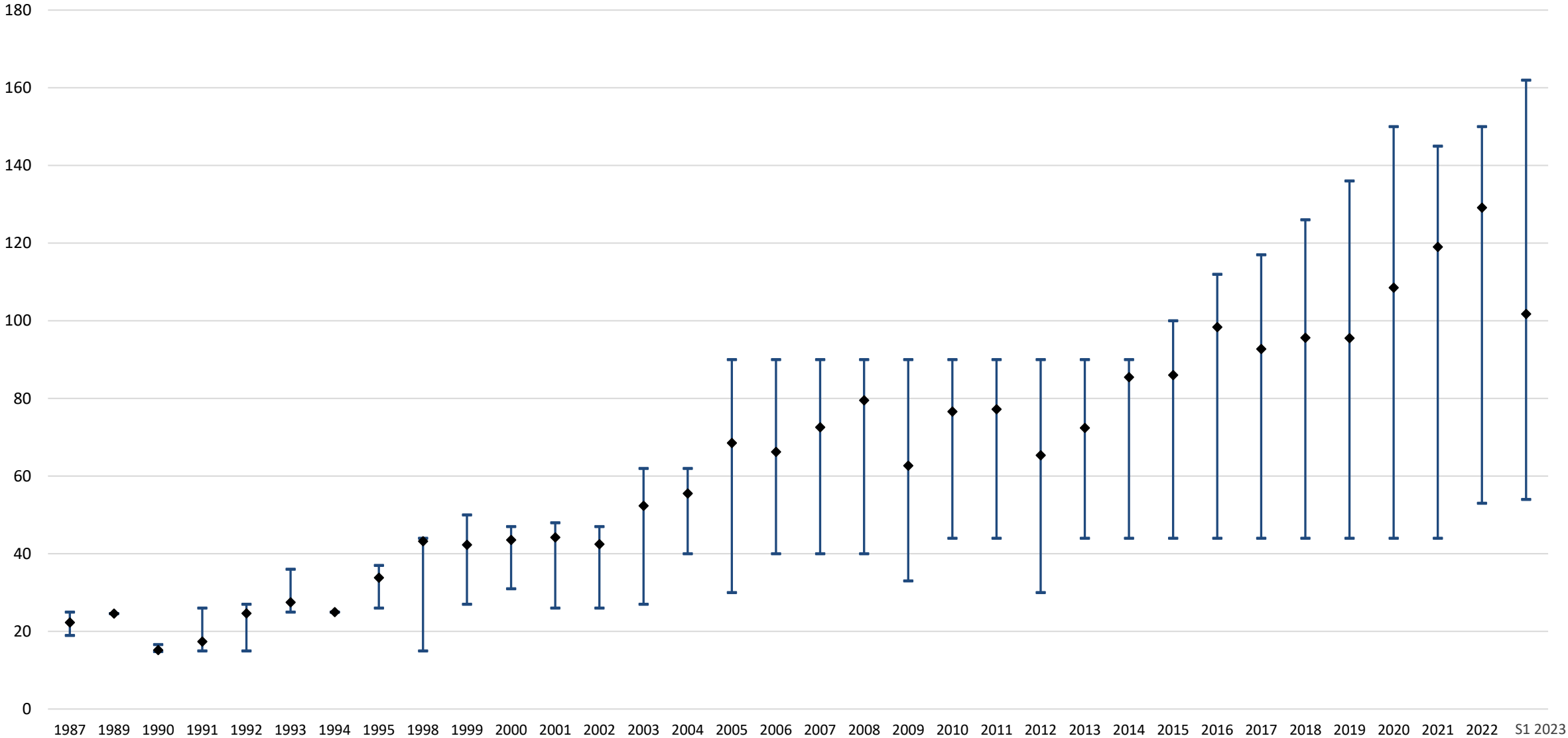
Average capacity per WTG installed per year



HWEA Wind Energy Statistics – S1 2023



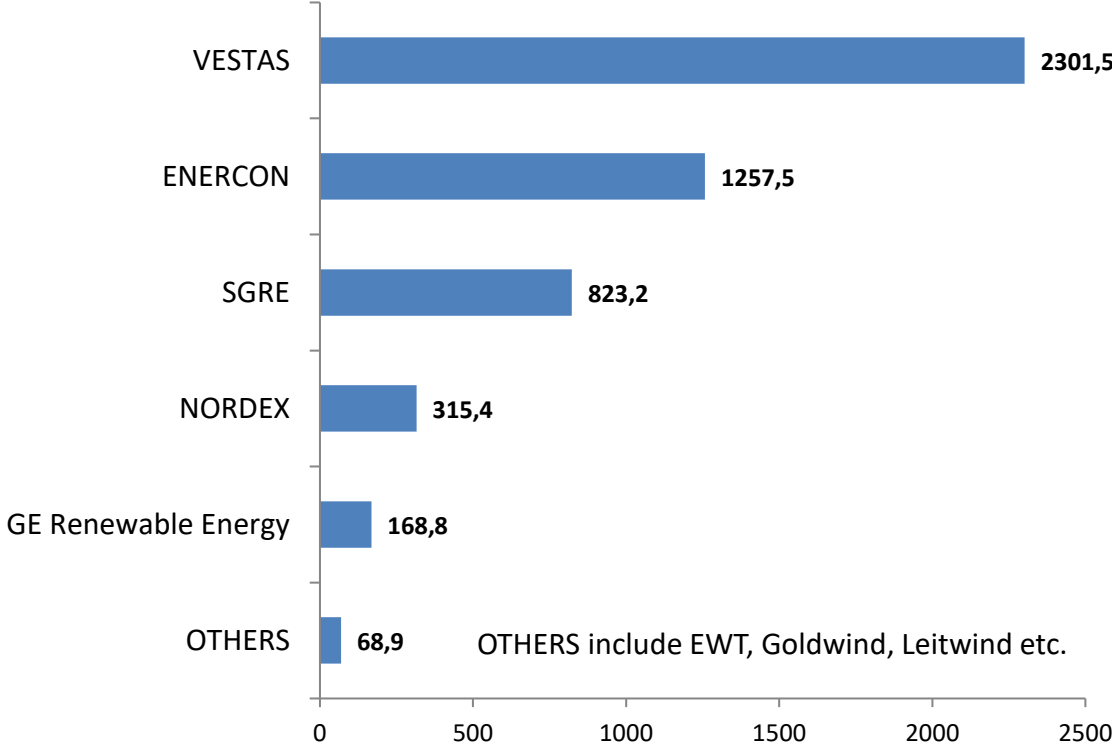
Min / Max / Weighted average - Rotor Diameter Per Year



HWEA Wind Energy Statistics – S1 2023



Capacity (MW) per manufacturer



Market share per manufacturer

